



Educational and Community Supports

Giving students the tools to reduce bullying behavior through the blending of school-wide positive behavior support, explicit instruction, and a redefinition of the bullying construct.

# Bully Prevention

## In Positive Behavior Support for Middle Schools

*Scott Ross, M.S., Rob Horner, Ph.D., & Bruce Stiller, Ph.D.*



# CONTENTS

ii. Before We Intervene.....	ii-1
<b>1. Student Curriculum (Part 1) .....</b>	<b>1-1</b>
<i>Objectives and Procedure.....</i>	<i>1-1</i>
<i>Teaching the Social Responsibility Skills .....</i>	<i>1-3</i>
<b>2. Student Curriculum (Part 2).....</b>	<b>2-1</b>
<i>Responding to Stop/walk/talk .....</i>	<i>2-2</i>
<i>Group Practice .....</i>	<i>2-2</i>
<b>3. Gossip .....</b>	<b>3-1</b>
<i>Stop/walk/talk with gossip .....</i>	<i>3-2</i>
<i>Group Practice .....</i>	<i>3-2</i>
<b>4. Inappropriate Remarks.....</b>	<b>4-1</b>
<i>Stop/walk/talk with inappropriate remarks .....</i>	<i>4-2</i>
<i>Group Practice .....</i>	<i>4-2</i>
<b>5. Cyber Bullying.....</b>	<b>5-1</b>
<i>Stop/walk/talk with cyber bullying.....</i>	<i>5-2</i>
<i>Group Practice .....</i>	<i>5-2</i>
<b>6. Supervising Behavior .....</b>	<b>6-1</b>
<i>Introduction.....</i>	<i>6-1</i>
<i>Reviewing the Social Responsibility Skills .....</i>	<i>6-2</i>
<i>Checking in .....</i>	<i>6-4</i>
<i>Rewarding Appropriate Behavior .....</i>	<i>6-4</i>
<i>Responding to Reports of Problem Behavior.....</i>	<i>6-4</i>
<b>7. Faculty Follow-up .....</b>	<b>7-1</b>
<i>Introduction.....</i>	<i>7-1</i>
<i>BP-PBS effectiveness Survey.....</i>	<i>7-2</i>
<i>Flow Chart for Decision Making .....</i>	<i>7-3</i>
<b>8. Where BP-PBS Came From.....</b>	<b>8-1</b>
<i>The Impact of Bullying.....</i>	<i>8-2</i>
<i>Current Interventions .....</i>	<i>8-2</i>
<i>BP-PBS.....</i>	<i>8-4</i>
<i>The Conceptual Framework Underlying BP-PBS.....</i>	<i>8-6</i>
<b>9. Citations .....</b>	<b>9-1</b>

# Before We Intervene.....

Prior to implementing BP-PBS in your school, it is important to understand the signals and layout most ideal for your specific setting. By giving these issues adequate consideration, the program will have a higher likelihood of being embraced by the students and staff.

## *The Stop Signal*

As discussed, Bully Prevention in Positive Behavior Support describes a 3 step response to problem behavior, including “Stop”, “Walk”, and “Talk. This terminology is adequate for most settings, but for some (particularly older students), this language may seem childish or “uncool”. Therefore, the language used for each of the three steps should be discussed prior to program implementation. Older students may wish to vote on the signals or staff may decide what signals will work best for their school, but two critical elements must be kept in mind. First, the signals must be short, easy to remember, and easy to produce. Complicated signals will only reduce the amount they are used. Second, whatever signal your school decides on, the ENTIRE school must implement it. Different classrooms or grades must not have their own signal. Doing so will eliminate the clarity of the response sequence.

The following are examples of statements that may be used in the place of “stop”:

“enough”

“time-out”

“quit-it”

“overboard”

“too far”

“un-cool”

The hand signal that accompanies the “stop” command should also be discussed, and might include:



## *Curriculum Delivery Layout*

In addition to the specified language, it is important to understand how Bully Prevention in Positive Behavior Support can be taught most effectively. For this purpose, the program has been broken into 6 lessons. Lesson 1 includes most of the curriculum components including the stop/walk/talk response, and also includes a good deal of class-wide practice. This lesson is the longest of the 6 and takes approximately 50 minutes to complete. The second lesson, ideally delivered on the following day, only takes 30 minutes, and includes how to reply when someone delivers the stop/walk/talk response to you, and also includes some essential group practice.

The following 4 sections of the manual cover specific examples of how to use the stop/walk/talk response appropriately, and should be delivered for 10-15 minutes one or two times a week. More specifically, following 3 sections involve practice around how to respond to gossip, inappropriate remarks, and cyber-bullying. The 4<sup>th</sup> is a generic practice lesson for use with other specific problem behaviors that may surface at your school.

Section 6 is the supervision curriculum. This section clarifies how supervision should be conducted in unstructured settings such as the cafeteria, gym, hallways, and playground. Delivered in each applicable setting, this practice involves reviewing how to respond to reports of problem behavior, how to reinforce appropriate use of stop/walk/talk, and how to check in with chronic targets and instigators. This is a critical part of BP-PBS as supervisors play an enormous role in the generalization of lessons learned inside the classroom. If we fail to respond to reports of problem behavior outside the classroom appropriately, the likelihood that children will use the program components will drop significantly.

Section 7, the faculty follow-up, is an opportunity to check how the program is working. Based on the responses to a small survey, changes can be made in how the program is implemented.

Finally, section 8 includes all the citations used throughout the manual as well as resources applicable to the effective and efficient use of the program.



# Bully Prevention

## In Positive Behavior Support

### Student Curriculum (Part 1)

**Time:**

50 minutes



### Bully Prevention Introduction

**Objectives:**

- Establish rules and expectations for group discussions
- Teach 3-5 school-wide rules for outside the classroom
- Teach Social Responsibility Skills (Stop/Walk/Talk)
- Practice



**Procedure:**

- I. Establish rules for instruction based on 3-5 school-wide positively stated rules

*Examples might include:*

- ☉ Be Safe - Keep hands and feet to self during lesson
- ☉ Be Respectful - One person speaks at a time
- ☉ Be Responsible - Use what you learn!

- II. Discuss what school-wide rules look like outside the classroom

*Examples might include:*

- ☉ Saying nice things to other students
- ☉ Walking in hallways or the cafeteria
- ☉ Keeping your hands and your feet to yourself

Notes: \_\_\_\_\_

---



---



---



---



---



---



---



---



---



---



---

### III. Discuss examples of not following school-wide rules in specific settings

Notes: \_\_\_\_\_

**Examples might include:**

- Running in the Hallways or Cafeteria
- Talking behind someone's back
- Throwing objects at another student
- Threatening another student
- Hitting, kicking, or restricting another's movement
- While playing basketball, 4-square, or kickball
- Calling someone names

### IV. Discuss why kids exhibit problem behavior outside the classroom

*The candle under a glass cup*

**Materials Needed:**

- Small candle
- Clear glass cup that can fit over the top of the candle
- Matches or lighter

**Procedure:**

1. Compare fire and problem behavior with the class (Light the candle)
  - Both can be bright and both can hurt
2. Explain how problem behavior needs *peer attention* to keep going just like a candle needs *oxygen* to stay lit.
3. Discuss the many forms of *peer attention*
  - Arguing with someone that teases you
  - Laughing at someone being picked on
  - Watching problem behavior and doing nothing about it.
4. Explain how taking away peer attention is like taking the oxygen away from a candle (cover the lit candle with the clear glass cup, and watch as the flame slowly dies out).
5. Students can take away the peer attention that keeps problem behavior going by:
  - Telling someone teasing you to "stop"
  - Walking away from problem behavior
  - Helping another student by saying "stop" or by walking away from problem behavior with them.
  - Telling an adult

## V. Teach Social Responsibility Skills (Stop/Walk/Talk)

*Describe the 3 steps for responding to problem behavior*

Notes: \_\_\_\_\_

*Be sure to practice each step with the students and ensure that they are fluent. This should include at least 3 correct examples and at least 2 non-examples (When not to use the 3-step response)*

### 1. The Stop Signal

- ⊙ Teach students the school-wide “stop signal” (verbal and physical action) for problem behavior.
- ⊙ Model the use of the stop signal when they experience problem behavior *or* when they see another student experiencing problem behavior
- ⊙ Practice the Stop Signal, calling volunteers to the front of the class.
  - **Include at least 3 examples of the right time to use the stop signal**

*Positive examples of when to use the stop signal might include:*

- Johnny pokes Sally in the back over and over while in line
- Susie teases Sally and calls her a derogatory name
- Joey tackles Sam while playing two-hand touch football
- Sam steals the ball away from Fred when they are not playing a game that involves stealing.

- **Include at least 1-2 examples of when not to use the stop signal**

*Negative examples: when not to use the stop signal*

- Johnny accidentally breaks the double-dribble rule in basketball
- Kelly makes a suggestion for a game that Fred does not like
- Sam steals the ball away from Fred when they are playing basketball: a game where stealing is appropriate
- Sally continues to poke Susie in line, even after Susie has delivered the stop signal





# Student Curriculum



Notes: \_\_\_\_\_

## ***Important Note:***

**If any student is in danger, the "stop" and "walk away" steps should be skipped, and the incident should be reported immediately.**

- ⊙ Describe to students how they should expect adults to respond to "Talk"
  1. **Adults will ask you what the problem is**
  2. **They will ask if you said "stop"**
  3. **They will ask if you "walked away" calmly**
  
- ⊙ Practice "talk" with student volunteers at the front of the class
  - **Again, be sure to include at least 3 examples of how to "talk" and at least one example of when not to "talk"**

## **4. Review Stop/Walk/Talk**

- ⊙ Test students orally on how they should respond to various situations that involve problem behavior

## ***Include questions that involve each possible scenario:***

- Using "Stop", "Walk", and "Talk"
- Responding to "Stop", "Walk", and "Talk"

# Bully Prevention

## In Positive Behavior Support

### Student Curriculum

**Time:**

30 minute lesson to be conducted on the day after lesson 1

**Objectives:**

- Review the Social Responsibility Skills (Stop/Walk/Talk)
- Teach students how to reply when someone uses Stop/Walk/Talk
- Group Practice

**Procedure:**

**Review rules for instruction based on 3-5 school-wide positively stated rules**

*Examples might include:*

- ⦿ Be Safe - Keep hands and feet to self
- ⦿ Be Respectful - When giving examples of things that have happened to you, rather than saying the names of others, say, "Someone I know..."
- ⦿ Be Responsible - Practice what you learn when you are outside the classroom

**Review what school-wide rules look like outside the classroom**

*Examples might include:*

- ⦿ Saying only nice things about other people
- ⦿ Following the rules of the game you are playing
- ⦿ Waiting your turn

Notes: \_\_\_\_\_

---



---



---



---



---



---



---



---



---



---



---



---



---



---



---



---

Notes: \_\_\_\_\_

## Review the Social Responsibility Skills (Stop/Walk/Talk)

*Discuss the 3 steps for responding to problem behavior*

- ⊙ Review the school-wide Stop/Walk/Talk signals (verbal and physical action) to be used when students experience problem behavior *or* when they see another student experiencing problem behavior
  - **Remind students that Stop/Walk/Talk removes the reinforcement for problem behavior**
  - **Teach students to encourage one another when they use the appropriate response**

## Responding to Stop/Walk/Talk

*Teach students that at some point the stop/walk/talk procedure will be used with EVERY student and it is important to respond appropriately, even if you don't agree.*

- ⊙ Model how to respond if someone else uses "stop", "walk", or "talk"
  1. **Stop what you are doing**
  2. **Take a deep breath and count to 3**
  3. **Go on with your day**

*Good examples of responding to stop/walk/talk should include*

- Responding appropriately even when you don't think you did anything wrong
- Responding appropriately even if you think the other student is just trying to get you in trouble

## Group Practice

*Break up the class into groups of 2*

- ⊙ Instruct the students to practice the "stop" signal, as well as how to reply to someone else using the "stop" signal with you.





# Bully Prevention

## In Positive Behavior Support

### Student Curriculum – Gossip

*Time:*

20 minute lesson

*Objectives:*

- Review the Social Responsibility Skills (Stop/Walk/Talk)
- Using Stop/Walk/Talk with Gossip
- Group Practice

*Procedure:*

Review rules for instruction based on 3-5 school-wide positively stated rules

*Examples might include:*

- ⊙ Be Safe - Keep hands and feet to self
- ⊙ Be Respectful - When giving examples of things that have happened to you, rather than saying the names of others, say, "Someone I know..."
- ⊙ Be Responsible - Practice what you learn when you are outside the classroom

Discuss what school-wide rules have to do with gossip

- ⊙ Being Respectful means saying only nice things about other students
- ⊙ Being Kind means encouraging others and making them feel good even when they are not present.

Notes: \_\_\_\_\_

\_\_\_\_\_

\_\_\_\_\_

\_\_\_\_\_

\_\_\_\_\_

\_\_\_\_\_

\_\_\_\_\_

\_\_\_\_\_

\_\_\_\_\_

\_\_\_\_\_

\_\_\_\_\_

Notes: \_\_\_\_\_

*Examples of NOT being respectful or kind to other students*

- Telling a negative story about someone else, regardless of whether it is true or not.
- Sharing secrets that someone told you
- Blaming negative behavior on someone else

### Review the Social Responsibility Skills (Stop/Walk/Talk)

*Discuss the 3 steps for responding to gossip*

- ⊙ Review the school-wide Stop/Walk/Talk signals (verbal and physical action) to be used when students hear something not kind or respectful about another student.
  - **How can Stop/Walk/Talk be used when someone says something disrespectful about another student?**
  - **Often, the target of gossip will not hear the negative remark, so it is important for others that DO hear the remark to say “stop”.**
  - **Sometimes this means saying stop to your friends, which can be very difficult to do.**

### Group Practice

*Break up the class into pairs including a bystander and an instigator.*

- ⊙ Instruct the students to practice using the “stop” signal and the reply to “stop” when someone says something unkind or disrespectful about another student.
  - **Students should first practice an instructed scenario prior to trying a scenario they have encountered.**

### Group Practice (Part 2)

- ⦿ After 5 minutes of practicing in pairs, bring the class back together and discuss questions and comments that arose during practice

*Next, separate class into groups of 3, with 1 person in each group acting as a playground supervisor, an instigator of gossip, and a bystander.*

- ⦿ Instruct the students to practice the entire Stop/Walk/Talk sequence to be used with gossip, how to reply when someone uses the "stop" signal with you, and how adults will respond to reports of gossip.

***When students report gossip to an adult:***

1. Adults will thank you for coming to them
2. They will ask you what the problem is
3. They will ask if you said "stop"
4. They will ask if you "walked away" calmly
5. They will practice Stop/Walk/Talk

- **Students should take turns being each of the roles**
- **Once students have completed an instructed practice scenario, then they may be allowed to practice a scenario that they have personally encountered.**

### Review Stop/Walk/Talk with Gossip

- ⦿ Test students orally on how they should respond to various situations that involve gossip
- ⦿ Reward Students for their participation and Appropriate Behavior

***Include questions that involve each possible scenario:***

- Using "Stop", "Walk", and "Talk"
- Responding to "Stop", "Walk", and "Talk"

Notes: \_\_\_\_\_

\_\_\_\_\_

\_\_\_\_\_

\_\_\_\_\_

\_\_\_\_\_

\_\_\_\_\_

\_\_\_\_\_

\_\_\_\_\_

\_\_\_\_\_

\_\_\_\_\_

\_\_\_\_\_

\_\_\_\_\_

\_\_\_\_\_

\_\_\_\_\_

\_\_\_\_\_

\_\_\_\_\_

\_\_\_\_\_

\_\_\_\_\_

\_\_\_\_\_

\_\_\_\_\_

\_\_\_\_\_

\_\_\_\_\_

\_\_\_\_\_

\_\_\_\_\_

\_\_\_\_\_

\_\_\_\_\_

\_\_\_\_\_

\_\_\_\_\_



# Bully Prevention

## In Positive Behavior Support

### Student Curriculum – Inappropriate Remarks

**Time:**

20 minute lesson

**Objectives:**

- Review the Social Responsibility Skills (Stop/Walk/Talk)
- Using Stop/Walk/Talk with Inappropriate remarks
- Group Practice

**Procedure:**

Review rules for instruction based on 3-5 school-wide positively stated rules

*Examples might include:*

- ⊙ Be Safe - Keep hands and feet to self
- ⊙ Be Kind - When giving examples of things that have happened to you, rather than saying the names of others, say, "Someone I know..."
- ⊙ Be Responsible - Practice what you learn when you are outside the classroom

Discuss what school-wide rules have to do with inappropriate remarks

- ⊙ Being Respectful means saying only nice things about other students
- ⊙ Being Kind means encouraging others and making them feel good.

Notes: \_\_\_\_\_

---



---



---



---



---



---



---



---



---



---



---

# Inappropriate Remarks

Notes: \_\_\_\_\_

## *Examples of NOT being respectful or kind to other students*

- Calling someone “gay” in an effort to put them down.
- Calling someone “girly” in an effort to put them down.
- Calling someone “retarded in an effort to put them down.

Any time we use one of these terms to put someone down, not only are we being unkind to that person, we are also connecting a negative connotation to the word we use, which is very disrespectful to women, people with mental retardation, and people who are gay.

## Review the Social Responsibility Skills (Stop/Walk/Talk)

*Discuss the 3 steps for responding to problem behavior*

- ◎ Review the school-wide Stop/Walk/Talk signals (verbal and physical action) to be used when students say something inappropriate about another student.
  - **How can Stop/Walk/Talk be used when someone uses an inappropriate remark**
  - **Often, those that use inappropriate remarks do not recognize that they are being disrespectful.**
  - **Sometimes this means discussing why certain terms are inappropriate**

## Group Practice

*Break the class up into groups of 2*

- ◎ Instruct the students to practice using the “stop” signal and the reply to “stop” when someone says something inappropriate
  - **Students should first practice an instructed scenario prior to trying a scenario they have encountered.**

# Inappropriate Remarks

Notes: \_\_\_\_\_

## Examples of replying to stop/walk/talk should include

- Responding appropriately even when you don't think you did anything wrong
- Responding appropriately even if you think the other student is just trying to get you in trouble

## Group Practice (Part 2)

- ⊙ After 5 minutes of practicing in pairs, bring the class back together and discuss questions and comments that arose during practice

*Next, separate class into groups of 4, with 1 person in each group acting as a playground supervisor, a target of an inappropriate remark, an instigator, and a bystander.*

- ⊙ Instruct the students to practice the entire Stop/Walk/Talk sequence, how to reply when someone uses the "stop" signal with you, and how adults will respond to reports of inappropriate remarks.

### *When students report gossip to an adult:*

1. Adults will thank you for coming to them
2. They will ask you what the problem is
3. They will ask if you said "stop"
4. They will ask if you "walked away" calmly
5. They will practice Stop/Walk/Talk

- **Once students have completed an instructed practice scenario, then they may be allowed to practice a scenario that they have personally encountered.**

## Review Stop/Walk/Talk

- ⊙ Test students orally on how they should respond to various situations that involve inappropriate remarks
- ⊙ Reward Students for their participation.

# Bully Prevention

## In Positive Behavior Support

### Student Curriculum – Cyber-Bullying

**Time:**

20 minute lesson

**Objectives:**

- Review the Social Responsibility Skills (Stop/Walk/Talk)
- Using Stop/Walk/Talk with Cyber-Bullying
- Group Practice

**Procedure:**

Review rules for instruction based on 3-5 school-wide positively stated rules

*Examples might include:*

- ⦿ Be Safe - Keep hands and feet to self
- ⦿ Be Respectful - When giving examples of things that have happened to you, rather than saying the names of others, say, "Someone I know..."
- ⦿ Be Responsible - Practice what you learn when you are outside the classroom

Discuss what school-wide rules have to do with text messaging, emails, and other digital technologies

- ⦿ Being Kind and Respectful means saying only nice things about other students, in your words as well as in your use of digital media.

Notes: \_\_\_\_\_

\_\_\_\_\_

\_\_\_\_\_

\_\_\_\_\_

\_\_\_\_\_

\_\_\_\_\_

\_\_\_\_\_

\_\_\_\_\_

\_\_\_\_\_

\_\_\_\_\_

\_\_\_\_\_

Notes: \_\_\_\_\_

*Examples of NOT being respectful or kind to other students*

- Repeatedly sending offensive, rude, or insulting emails and text messages
- Posting cruel gossip or rumors about a person to damage his or her reputation or friendships
- Sharing someone’s secrets online

## Review the Social Responsibility Skills (Stop/Walk/Talk)

*Discuss the 3 steps for responding to Cyber-Bullying*

- ⦿ Review the school-wide Stop/Walk/Talk signals (verbal and physical action) to be used when students use technology to be disrespectful to other students.
  - **How can Stop/Walk/Talk be used when someone uses technology to be disrespectful or unkind to others?**
  - **Here, walking away may not be feasible, in which case, skipping to the talk step would be an appropriate response.**

## Group Practice

*Break the class up into groups of 2, and have the students pass a piece of paper back and forth to one another, simulating digital media.*

- ⦿ Instruct the students to practice using a “stop” signal when someone does something disrespectful using digital media. Also, students should practice how to respond when someone delivers a “stop” response to them.

*Examples of replying to stop/walk/talk should include*

- Responding appropriately even when you don't think you did anything wrong
- Responding appropriately even if you think the other student is just trying to get you in trouble





# Supervising Behavior



Notes: \_\_\_\_\_

## The Social Responsibility Skills (Stop/Walk/Talk)

*It is very important that all staff are fluent with the 3 step response. Practice should include at least 3 correct examples and at least 2 non-examples (When not to use the 3-step response)*

## The Stop Signal

- ⦿ How the stop signal should look and sound
  - Firm hand signal
  - Eye contact
  - Clear voice
- ⦿ Practice modeling the stop signal for students that experience problem behavior *or* when they see other students experiencing problem behavior

## Walk Away

*Sometimes, even when students tell others to “stop”, problem behavior will continue. When this happens, students are to “walk away” from the problem behavior.*

- ⦿ Practice modeling “walking away” when students experience continued problem behavior *or* when they see another student experiencing continued problem behavior
  - Staff should remind students that walking away removes the reinforcement for problem behavior
  - Teach students to encourage one another when they use the appropriate response

## Talk: report problem to an adult

*Even when students use “stop” and they “walk away” from the problem, sometimes students will continue to behave inappropriately toward them. When that happens, students should “talk” to an adult.*



## Supervising Behavior

- Practice modeling the "talk" technique students should use when they experience continued problem behavior *or* when they see another student experiencing continued problem behavior

Notes: \_\_\_\_\_

*Be sure to understand the line between "talking" and tattling.*

- "Talking" is when you have tried to solve the problem yourself, and have used the "stop" and "walk" steps first:
  - Did you request "stop"?
  - Did you "walk away"?
- Tattling is when you do not use the "stop" and "walk away" steps before "talking" to an adult
- Tattling is when your goal is to get the other person in trouble

- Note that if any student is in danger, the "stop" and "walk away" steps should be skipped, and telling an adult should happen immediately

### Responding to Stop/Walk/Talk

*At some point the stop/walk/talk procedure will be used with every student and it is important for them to respond appropriately, even if they don't agree with why the student is saying stop, walking away, or telling an adult.*

- Practice modeling how to respond if someone else uses "stop", "walk", or "talk"
  - Stop what you are doing
  - Take a deep breath and count to 3
  - Go on with your day

*Good examples of responding to stop/walk/talk should include*

- Responding appropriately even when you don't think you did anything wrong
- Responding appropriately even if you think the other student is just trying to get you in trouble







# Bully Prevention

In Positive Behavior Support

## Faculty Follow-up Survey

1. Are students able to identify our school-wide expectations?

No 1 2 3 4 Yes 5

---

2. Do students use the BP-PBS “stop” signal when appropriate?

No 1 2 3 4 Yes 5

---

3. Do faculty use the BP-PBS “pre-correct” routine when appropriate?

No 1 2 3 4 Yes 5

---

4. Do faculty use the BP-PBS “review” routine when appropriate?

No 1 2 3 4 Yes 5

---

5. To what extent do students perceive our school as a safe setting?

Not Safe 1 2 3 4 Very Safe 5

---

6. Has there been a decrease in aggression since we instituted BP-PBS?

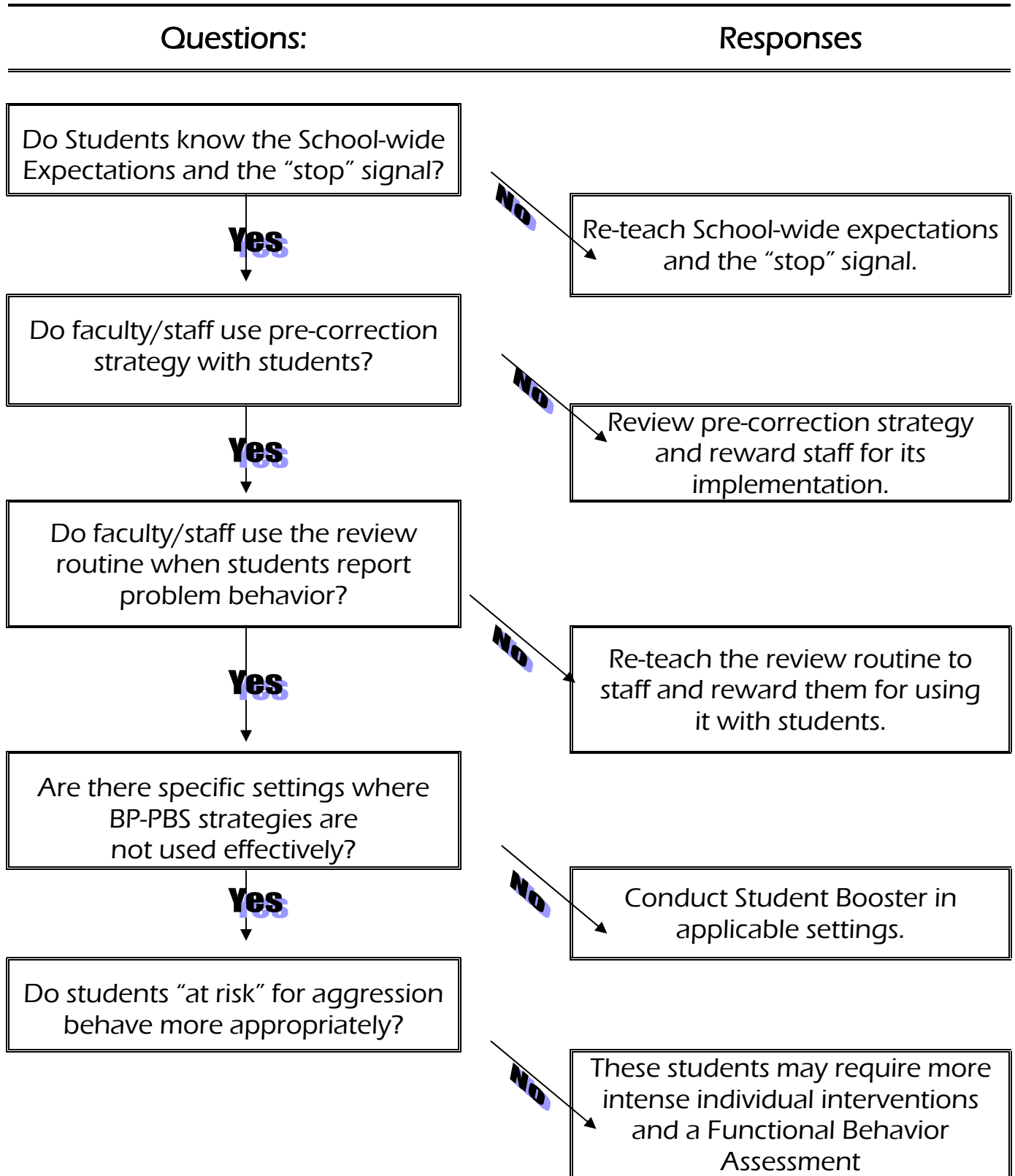
No Decrease 1 2 3 4 Big Decrease 5

---

# Bully Prevention

In Positive Behavior Support

## Decision Making Flowchart



# Bully Prevention

## In Positive Behavior Support

### Introduction

Bullying has reached epidemic proportions in American schools. The National School Safety Center (NSSC) called bullying the most enduring and underrated problem in U.S. schools (Beale, 2001), and in a national survey, nearly 30 percent of students surveyed reported being involved in bullying as either a perpetrator or a victim (Nansel, et al., 2001; Swearer & Espelage, 2004). In an effort to respond to this epidemic, Bully Prevention in Positive Behavior Support was designed, blending school-wide positive behavior support, explicit instruction regarding a 3-step response to problem behavior, and a reconceptualization of the bullying construct. Bully-Prevention in Positive Behavior Support (BP-PBS) gives students the tools necessary to remove the social rewards maintaining inappropriate behavior, thereby decreasing the likelihood of problem behavior occurring in the future. BP-PBS not only decreases incidents of bullying behavior, but also increases appropriate recipient responses to bullying behavior and appropriate bystander responses to bullying behavior. In addition, because the program is designed to fit within a larger system of positive behavior support, it is far less resource intensive and far more likely to be implemented over consecutive years.

In an effort to evaluate the initial effectiveness of the BP-PBS curriculum, a pilot study was run in a nearby elementary school during the winter of 2007. Ten minute observations were conducted on three students as selected by the principal, along with a composite peer during lunch recess to evaluate the effectiveness of the program. Results indicated a significant reduction in problem behavior after the intervention was delivered (55-69% reduction). In addition, other students on the playground were significantly more likely to respond appropriately when they were bullied (see Appendix A, B, and C).

## The Impact of Bullying

Victims and perpetrators of bullying are at risk for behavioral, emotional, and academic problems (Espelage & Swearer, 2003; Schwartz & Gorman, 2003) and are also at increased risk for depression, anxiety, loneliness, low self-esteem, and suicide (Baldry & Farrington, 1998). Over time, these children are more likely to skip and/or drop out of school (Berthold & Hoover, 2000; Neary & Joseph, 1994) and suffer from underachievement and sub-potential performance in employment settings (Carney & Merrell, 2001; NSSC, 1995). Bullies in particular are more likely to acquire increased numbers of criminal convictions and traffic violations than their less-aggressive peers (Roberts, 2000), and children who are both victims and perpetrators of bullying (bully/victims) are found to have significantly lower levels of social acceptance and self-esteem than children who are bullies or victims only (Andreou, 2000). The now infamous Columbine killings were perpetrated by young people thought to fit within this bully/victim category who believed they had a grievance against those who had treated them badly or had seemed to collude in their social ostracism (Rigby, 2006).

## Current Interventions

Because of the detrimental effects, great attention in education has been directed toward "bullies" and the negative impact of their behavior on schools (Smokowski & Kopasz, 2005). Major concern about improving school safety has followed, with an onslaught of bully-prevention campaigns across the country. According to a national survey of state departments of education, 39 states inform educators, parents, and students about how to respond to bullying (Furlong & Morrison, 2000), and 23 states have passed anti-bullying laws including clear prohibitions on bullying and legislative findings of its deleterious effects on school environments (<http://bullypolice.org>). With this enhanced interest in stopping bullying has come a rapidly increasing number of intervention programs designed to reduce bullying in schools.

However, despite the overdue attention, there are indications that the movement is not making good progress. The U.S. Surgeon General's report on youth violence (U.S. Department of Health and Human Services, 2001) identified 29 best practices in youth violence prevention; the only bullying program to make the list was the Olweus Bullying Prevention Program (Olweus, Limber, & Mihalic, 1999), and it was listed as a "promising" rather than a "model" program. A more recent listing of 32



"effective programs" produced the same result; only the Olweus program made the list (Osher & Dwyer, 2006). Finally, a meta-analysis of bullying prevention programs conducted by Merrell, Gueldner, Ross, and Isava (in press) found that anti-bullying programs produced meaningful effects for only about one third of the outcome variables, with improved outcomes being noted mostly in indirect, knowledge based outcomes (i.e. knowledge of the prevention program lesson materials).

## **The Bullying Construct**

Why then are there so few programs with documented effectiveness? One critical problem is the difficulty in conceptualizing and measuring bullying behavior (Griffin & Gross, 2004). Common definitions of "bullying" involve repeated acts of aggression, intimidation, or coercion against a victim who is weaker in terms of physical size, psychological/ social power, or other factors that result in a notable power differential (Carney & Merrell, 2001; Due, et al., 2005; Olweus, 1993; Smith & Ananiadou, 2003; Smith & Brain, 2000). The broad range of physical, verbal, and social behaviors, the intent to harm, the repetition of confrontation, and the imbalance of power between the perpetrator(s) and victim(s) are key features of bullying that make it extremely difficult to recognize and measure, forcing observers to judge not only intent, but the levels of power in each participant, and the number of times the behavior has occurred in the past. There is no doubt that an understanding and an appreciation of bullying has been aided by the development of these complex definitions, but they are clearly not ideal for assessing its prevalence nor developing effective interventions.

## **Program Maintenance**

Another major issue in previously designed bullying prevention programs is the lack of program maintenance. Of the positive outcomes found in some interventions, few have been maintained even two years later. For example, an implementation of the Olweus Bullying Prevention Program in southeastern United States (Limber et al., 2004) produced significant reductions in self-report measures of peer victimization in boys, but 2 years later, differences from the baseline level of peer victimization were insignificant. Additionally, an analysis of results obtained in a study conducted in Rogaland, Norway indicated an actual increase in bullying behavior 3 years after the implementation of the Olweus program (Roland, 1993). Several reasons for these disappointing results exist. First, bullying programs often require large amounts of time and resources to implement, and schools are unable to

continue their focus on bullying when few positive outcomes are seen. Some have suggested that the close involvement and support of Olweus in the Norwegian anti-bullying program may have accounted for its relatively high level of effectiveness (Rigby, 2006).

Another evident problem is the lack of sustained school-wide systems for maintaining prevention efforts. Consistent findings across interventions suggest that bully prevention programs involving consistent, school-wide efforts along with the creation of pro-social atmospheres tend to be more effective than programs that implement at the classroom level only or address just the victims and/or bullies involved (Olweus, Limber, & Mihalic, 1999; Pepler et al., 1994).

## **Bystanders**

With regard to involving more than just the victims and bullies in prevention efforts, research on the contextual process of bullying provides significant support for the inclusion of bystanders in bullying intervention efforts (O'Connell et al., 1999). Along with the victims of bullying, bystanders play an enormous role in acting to maintain bullying behavior by either responding positively (e.g. joining in, laughing) or simply standing and watching, rather than intervening to help the victim. Very few programs take this important process into account and it has been suggested that future research include teaching bystanders specific strategies to either remove themselves from the bullying vicinity in order to avoid inadvertently reinforcing the behavior, or to intervene on behalf of the victim (Hartung, & Scambler, 2006).

## **BP-PBS**

In an effort to respond to the problems in bullying prevention, BP-PBS takes into account each of the issues discussed above in an effort to positively impact the effects of bullying on our schools and children.

## **With Regard to the Bullying Construct**

The first step in developing an effective bully-proofing program is an evaluation of bullying behavior. Because of the problems evident in the definition of bullying, BP-PBS will focus on the improvement of behaviors that are specific, observable, and measurable. In addition, the definitions of these behaviors will not speculate on the intent of the behavior, the power of the individuals involved, or the frequency of its occurrence. Unfortunately, the definitions provided in BP-PBS will not fit into many

bullying categories as provided by past researchers and will likely be considered within a broader category of victimization - and rightly so. Victimization includes problem behavior regardless of a power differential and regardless of frequency. Therefore, single incidents of problem behavior between children of similar power will be responded to in an equal fashion. Reducing peer maintained problem behavior outside the classroom remains the goal of BP-PBS, and the reduction of "bullying" behaviors is a sub-set of this process.

### **With Regard to Program Maintenance**

BP-PBS also takes into account the problems associated with inadequate maintenance of prevention programs. First of all, BP-PBS is an addition to the already research substantiated School-wide Positive Behavior Support (Hawkins, Catalano, & Kosterman, Abbott, & Hill, 1999; Metzler, Biglan, Rusby, & Sprague, 2001). The program requires only a small amount of additional resources from the school, making it far more likely to be implemented with fidelity and maintained over multiple years of implementation. In addition, schools will be required to first maintain effective school-wide systems to a criteria of at least 80% on the School-Wide Evaluation Tool (Todd, et. al, 2003), a tool designed to measure the use of school-wide positive behavior support systems. Having these systems in place will provide familiarization with positive behavior supports and empirically based instructional techniques, making effective and long-lasting program implementation more likely. Lastly, having effective school-wide positive behavior support practices in place will likely increase community buy-in, resources allocated to program implementation, and ongoing professional support.

### **With Regard to Bystanders**

Finally, to decrease the frequency of problem behavior and prevent bullying, in addition to redefining bullying and ensuring program maintenance, we must analyze the causal variables that maintain the problem behavior. The events that serve to reinforce problem behavior - increasing the likelihood that it will occur again - will be of particular importance. If perpetrators attain peer attention or tangible items when they behave inappropriately, they will be more likely to engage in those behaviors in the future. BP-BPS teaches the entire school an effective 3-step response to problem behavior, encouraging them not to reinforce problem behavior, thereby putting the behavior on extinction. In addition, students will be rewarded for responding appropriately to problem behavior or intervening to

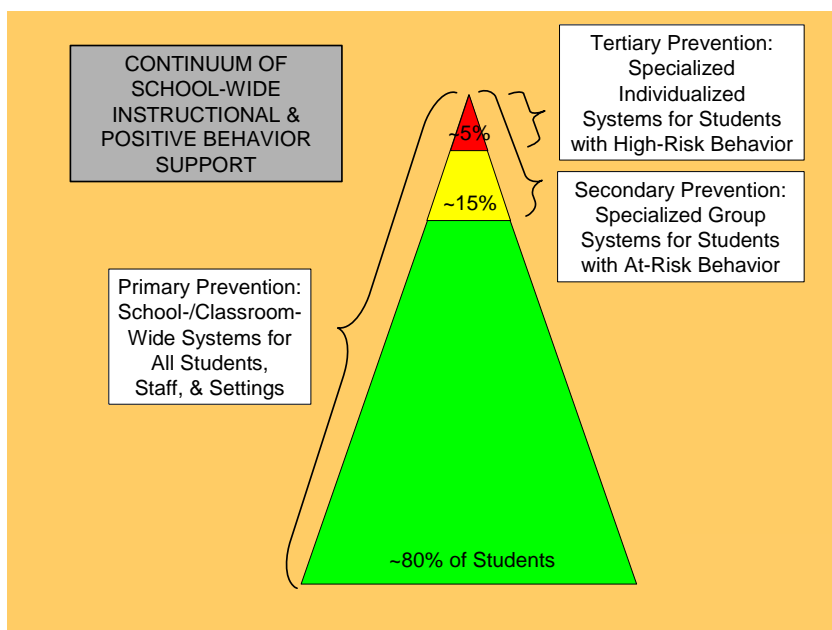
help other students in need. Finally, staff within schools that implement the program are taught a clear and simple method of responding to reports of problem behavior, thereby reducing the likelihood of future occurrences.

## The Conceptual Framework Underlying BP-PBS

### Positive Behavior Support

BP-PBS was designed to fit within a system of Positive Behavior Support (PBS), a prevention-focused alternative to student support that blends socially valuable outcomes, research-based procedures, behavioral science, and a systems approach to reduce problem behavior and improve school climate (Horner, Sugai, Todd, & Lewis-Palmer, 2005). With a foundation in early efforts to apply principles of behavior to life improvement for children with severe problem behaviors (Bijou & Baer, 1961; Bijou, Peterson, & Ault, 1968), PBS involves the application of behavior analysis to real world settings where children and adults struggle to maintain appropriate behavior. Through a three tiered prevention model (Walker et al., 1996), Positive Behavior Support utilizes effective strategies to create environments that support and encourage success for both teacher and student behavior (Lewis, Sugai, & Colvin, 1998; Sugai et al., 2000). See Figure 1 below for a description of the 3-tier model of behavior support.

Figure 1. Three-tier model of Positive Behavior Support (Walker et. al, 1996)



The primary tier of PBS strives to create positive, predictable environments for all students at all times of the day. This tier encourages the use of empirically-tested instructional principles to clearly teach expected, appropriate, positive behavior to all students, modeling appropriate behavior, leading them through practice in specific settings, and testing their knowledge (Colvin & Kame'enui, 1993). Effective reinforcement of appropriate and expected behaviors follows, and is instated by all staff in the school (Crone & Horner, 2003), who receive training and feedback regarding the effective implementation of the systems. In addition, reinforcement and discipline are documented through a concise, predictable, and clear continuum of consequences matched to the intensity of the problem behavior (Sprague & Horner, 2006).

The secondary tier of school-wide positive behavior support includes all of the pieces described in the primary tier with additional support given to students who are "at risk" for whom the primary tier of support is not enough. The secondary tier usually involves interventions given to small groups of children, including more reinforcement, and a more individual consideration of antecedents and consequences (Sugai, et al., 2000).

Finally, the tertiary tier of support is for students whose negative behavior patterns have been established and who fail to respond to the primary and secondary levels of intervention. For these students, behavior support is individualized based on a functional assessment of their behavior. The foundation for understanding patterns of problem behavior (Repp & Horner, 1999), functional assessment takes note of individual differences, links interventions directly to problem behavior, and increases the effectiveness of interventions (O'Neill, Horner, Albin, Sprague, Storey, & Newton, 1997).

PBS has been shown to have short and long-term beneficial effects on attachment to school, academic achievement, aggression, drug use, crime, student reports of positive reinforcement, positive referrals, decreased discipline referrals, and increased academic learning time (Hawkins, Catalano, Kosterman, Abbott, & Hill, 1999; Metzler, Biglan, Rusby, & Sprague, 2001). To date, evaluation and research studies have focused on the impact of PBS on the improvement of social and academic outcomes for all students. But even with the powerful impact it has on school systems, a small population of students remain in need of additional behavioral supports surrounding problem behavior outside the classroom, including victimization and bullying. BP-PBS was designed for these secondary

and tertiary tier students.

## **Bully-Prevention in Positive Behavior Support**

The conceptual framework for Bully-Prevention in Positive Behavior Support lies in an effort to identify the most efficient procedures for achieving durable reductions in violent and disruptive behavior. Among the most important changes to occur in the field over the past 20 years are shifts in emphasis toward prevention as well as remediation of problem behaviors (Horner, et al., 2004). It is this emphasis on establishing preventative systems of behavior support that prompted the development of PB-PBS. Six key features of BP-PBS map perfectly onto those developed through a synthesis of research on effective implementation of school-wide PBS, making BP-PBS an ideal additional component of PBS (see figure 2 below).

### **Figure 2.**

#### ***Six Key features of Bully Prevention in Positive Behavior Support***

1. The use of empirically-tested instructional principles to teach expected behavior outside the classroom to all students.
2. The monitoring and acknowledgement of students for engaging in appropriate behavior outside the classroom.
3. Specific instruction and pre-correction to prevent bullying behavior from being rewarded by victims or bystanders.
4. The correction of problem behaviors using a consistently administered continuum of consequences.
5. The collection and use of information about student behavior to evaluate and guide decision making.
6. The establishment of a team that develops, implements, and manages the BP-PBS effort in a school.

Decreasing the frequency and preventing future incidents of bullying requires the identification of causal variables over which parents, educators, and professionals have control. Such variables are to be found outside the person: the events that reliably precede and follow problem behavior. In other words, what is needed is a functional assessment of bullying. A functional assessment is used to identify events in the immediate context that often trigger problem behavior and also events that might serve to reinforce problem behavior, increasing the likelihood that it will occur again. By this definition, the

events that trigger and maintain bullying can be observable and subject to alteration by school staff and professionals. The following 2 models depict the various elements of the BP-PBS program and the hypothesized effects on peer maintained problem behavior (see figure 3 below). The first describes an environment that promotes or sustains bullying behavior, while the second outlines the linked strategies of BP-PBS that make the maintenance of bullying less likely.

Figure 3.

*Conceptual Framework of BP-PBS: Environments that promote or sustain bullying behavior and the strategies of BP-PBS making the maintenance of bullying less likely.*

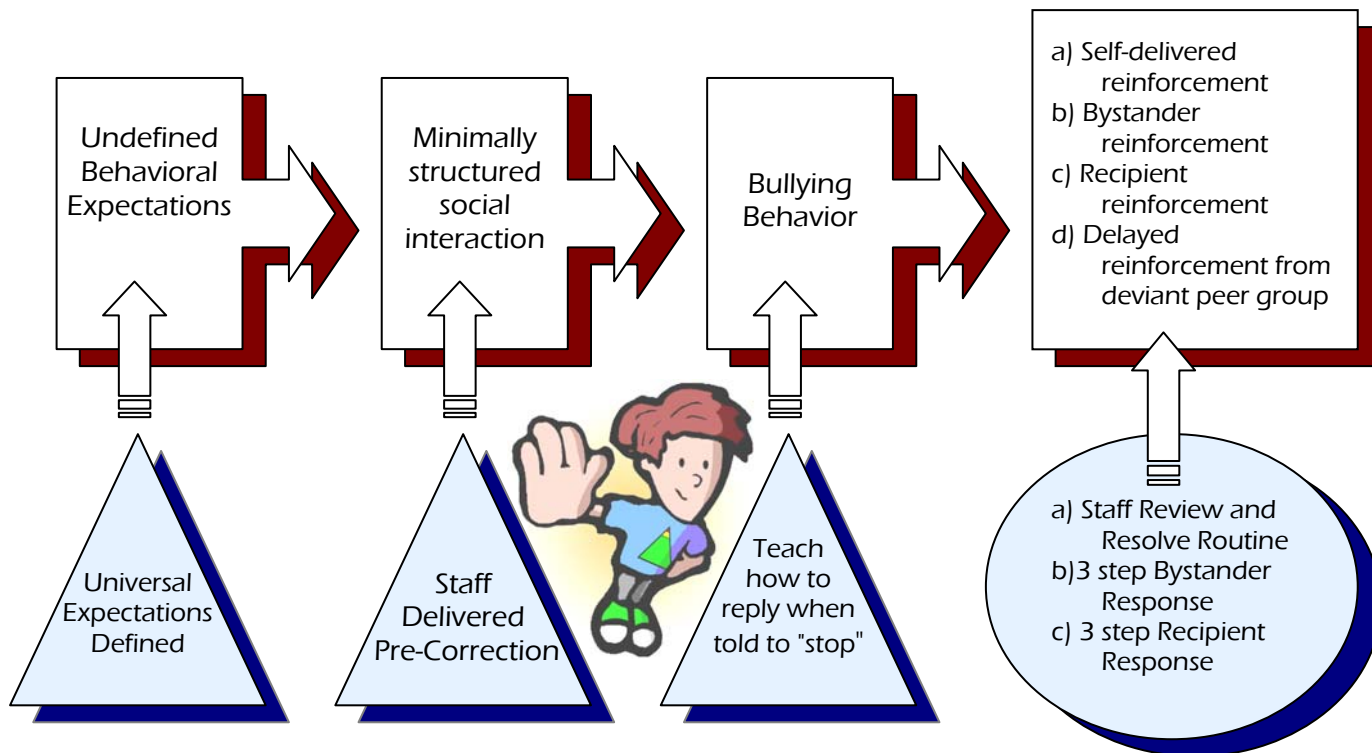


Figure 3 indicates how Bully-Prevention in Positive Behavior Support works to reduce incidents of bullying through the alteration of events that precede and follow behavior. Specifically, BP-PBS works to teach specific behaviors that will reduce the probability of bullying incidents. Research suggests that bullying behavior is frequently followed by and reinforced by peer attention or tangibles (Salmivalli, 2002; Soutter & McKenzie, 2000). Through the explicit teaching of a 3-step response to problem behavior, students learn to eliminate the reinforcement for bullying. In addition, inconsistent staff procedures for dealing with reported incidents of bullying can lead to an increased likelihood of its display in certain settings. In a study of behavioral procedures in schools, the major limitation of many discipline programs is a lack of clear procedural implementation guidelines (Chard, Smith, & Sugai, 1992).

Students who frequently exhibit problem behavior do not take long to learn what they can get away with, and with little staff consistency, these students quickly discover how to "work the system". BP-PBS eliminates this problem through specific instruction to all school staff on effective, efficient procedures for both responding to reports of problem behavior and delivering consequences. Through the implementation of these procedures, staff members build consistency regarding responses to problem behavior, thereby reducing the probability that students will attempt to work the system.





- Alberto & Troutman, 2003. *Applied Behavior Analysis for Teachers*; 6th edition. Merrill Prentice Hall. Upper Saddle River: New Jersey.
- Andreou, E. (2000). Bully/victim problems and their association with psychological constructs in 8 to 12 year old Greek schoolchildren. *Aggressive Behavior, 26*, 49-56.
- Baldry, A. C., & Farrington, D. P. (1998). Parenting influences on bullying and victimization, *Legal and Criminological Psychology, 3*, 237-254.
- Beale, A. V. (2001). Bullybusters: Using drama to empower students to take a stand against bullying behavior. *Professional School Counseling, 4*, 300-306.
- Berthold, K. A., & Hoover, J. H. (2000). Correlates of bullying and victimization among intermediate students in the Midwestern USA. *School Psychology International, 21(1)*, 65-78.
- Bijou, S. W., & Baer, D. M. (1961). *Child Development: Vol. 1. A Systematic and Empirical Theory*. New York: Appleton-Century-Crofts.
- Bijou, S. W., Peterson, R. F., & Ault, M. H. (1968). A method to integrate descriptive and experimental field studies at the level of data and empirical concepts. *Journal of Applied Behavioral Analysis, 1*, 175-191
- Carney, A. G., & Merrell, K. W. (2001). Bullying in schools: Perspectives on understanding and preventing an international problem. *School Psychology International, 22*, 364-382.
- Chard, D., Smith, S., & Sugai, G. (1992) "Packaged discipline programs: a consumer's guide", *Oregon Conference Monograph*, Eugene, OR: University of Oregon.
- Colvin, G., & Kame'enui, E. J. (1993). Reconceptualizing behavior management and school-wide discipline in general education. *Education and Treatment of Children, 16, 4*, 361-81.
- Cornell, D. G., Sheras, P. L. & Cole, J. C. Assessment in Bullying. In Jimerson, S. R., & Furlong, M. J. (2006). *Handbook of School Violence and School Safety: From research to practice*. Lawrence Erlbaum, Mahwah, New Jersey, 191-207.
- Crone, D. A. & Horner, R. H. (2003). *Building Positive Behavior Support Systems in Schools: Functional Behavioral Assessment*. New York: Guilford Press.

- Due, P., Holstein, B. E., Lynch, J., Diderichsen, F., Gabhain, S. N., Scheidt, P., & Currie, C. (2005). Bullying symptoms among school aged children: International comparative cross-sectional study in 28 countries. *European Journal of Public Health, 15*, 128-132.
- Espelage, D. L., & Swearer, S. (2003). Research on school bullying and victimization: What have we learned and where do we go from here? *School Psychology Review, 23*, 365-383.
- Frey, K. S., Dietsch, B. J., Diaz, M., MacKenzie, E. P., Edstrom, L. V., Hirschstein, M. K., & Snell, J. L. (2004). *The Student Experience Survey: What School is Like For Me*. Seattle, WA: Committee for Children.
- Furlong, M., Morrison, G., (2000). The school in school violence: definitions and facts. *Journal of Emotional and Behavioral Disorders, 8*(2), 71-82.
- Gresham, F. M., & Elliott, S. N. (1990). *The Social Skills Rating System (SSRS)*. Circle Pines, MN: AGS Publishing.
- Griffin, R. S., & Gross, A. M. (2004). [Childhood bullying: Current empirical findings and future directions for research](#). *Aggression and Violent Behavior, 9*(4), 379-400.
- Hartung, C. M., & Scambler, D. J., (2006) Dealing with bullying and victimization in schools. *Emotional & Behavioral Disorders in Youth, 77-80*.
- Hawkins, J. D., Catalano, R. F., Kosterman, R., Abbott, R., & Hill, K. G. (1999). Preventing adolescent health-risk behaviors by strengthening protection during childhood. *Archives of Pediatrics and Adolescent Medicine, 153*, 226-234.
- Hawley, P. H. (1999). The ontogenesis of social dominance: a strategy-based evolutionary perspective. *Developmental Review, 19*, 97-132.
- Horner, R. H. (2000). Positive behavior supports. *Focus on Autism and Other Developmental Disabilities, 15*(2), 97-105
- Horner, R.H., Sugai, G., Todd, A.W., & Lewis-Palmer, T. (2005). School-wide positive behavior support: An alternative approach to discipline in schools. In L. Bambara & L. Kern (Eds.). *Individualized supports for students with problem behavior: Designing positive behavior plans*. (pp.359-390), New York,: Guilford Press.

- <http://bullypolice.org>, Retrieved March 14, 2006.
- Lewis, T. J., Sugai, G., & Colvin, G. (1998). Reducing problem behavior through a school-wide system of effective behavioral support: Investigation of a school-wide social skills training program and contextual interventions. *School Psychology Review, 27*, 446–459.
- Limber, S. P., Maury, N., Allison, J., Tracy, T., Melton, G. B., & Flerx, V. (2004). Implementation of the Olweus Bullying Prevention Program in the southeastern United States. In P. K. Smith, D. Pepler, & K. Rigby (Eds.), *Bullying in schools: How successful can interventions be* (pp. 55-80)? Cambridge, England: Cambridge University Press.
- Merrell, K., Gueldner, B., Ross, S. W., & Isava, D. (Expected 2006). The Effectiveness of Bullying Intervention Programs: A Meta-Analysis. *In Press*.
- Metzler, C.W., Biglan, A., Rusby, J. C., & Sprague, J. R. (2001). Evaluation of a comprehensive behavior management program to improve school-wide positive behavior support. *Education and Treatment of Children, 24*, 448–479.
- Morrison, B. (2002). Bullying and victimization in schools: A restorative justice approach. *Trends and Issues, 219*.
- Mynard, H., & Joseph, S. (1997). Bully victim problems and their association with Eysenck's personality dimensions in 8 to 13 year olds. *British Journal of Educational Psychology, 67*, 51-54.
- Nansel, T. R., Overpeck, M., Pilla, R. S., Ruan, W. J., Simmons-Morton, B., & Scheidt, P. (2001). Bullying behaviors among US youth: Prevalence and association with psychosocial adjustment. *JAMA, 285*, 2094-2110.
- National School Safety Center (1995). *School bullying and victimization*. Malibu, CA: Author.
- O'Connell, P., Pepler, D., & Craig, W. (1999). Peer involvement in bullying: insights and challenges for intervention. *Journal of Adolescence, 22*, 437-452.
- Olweus, D. (1993). *Bullying at school: What we know and what we can do*. Malden, MA: Blackwell Publishing.
- Olweus, D., Limber, S., & Mihalic, S. (1999). Bullying prevention program. In D. S. Elliott (Ed.), *Blueprints for violence prevention book nine* (pp. 1-79). Golden, CO: Venture Publishing and C & M Press.

- O'Neill, R. E., Horner, R. H., Albin, R. W., Sprague, J. R., Storey, K., & Newton, J. S. (1997). *Functional Assessment and Program Development for Problem Behavior*. Belmont, CA: Brooks/Cole.
- Osher, D., & Dwyer, K. (2006). *Safe, supportive, and effective schools: Promoting school success to reduce school violence. Handbook of school violence and school safety: From research to practice.* Shane Jimerson.
- Pepler, D.J., & Craig, W. M. (1995). A peek behind the fence: Naturalistic observations of aggressive children with remote audiovisual recording. *Developmental Psychology*, 31, 548-553.
- Pepler, D. J., Craig, W., Ziegler, S., & Charach, A. (1994). An evaluation of an anti-bullying intervention in Toronto schools. *Canadian Journal of Community Mental Health*, 13, 95- 110.
- Repp, A. C., & Horner, R. H. (1999). *Functional Analysis of Problem Behavior: From Effective Assessment to Effective Support*. Wadsworth Publishing.
- Rigby, K. (2002b). *New perspectives on bullying*. London: Jessica Kingsley.
- Rigby, K., (2006) What we can learn from evaluated studies of school-based programs to reduce bullying in schools. In Jimerson, S. R., & Furlong, M. J. (2006). *Handbook of School Violence and School Safety: From research to practice*. Lawrence Erlbaum, Mahwah, New Jersey, 325-337.
- Roberts, W. B. (2000). The bully as victim. *Professional School Counseling*, 4, 148-156.
- Roland, E. (1993). Bullying: A developing tradition of research and management. In D. P. Tattum (Ed.), *Understanding and managing bullying* (pp. 15-30). Oxford, England: Heinemann Educational.
- Salmivalli, C. (2002). *Is there an age decline in victimization by peers at school?* *Educational Research*, 44, 269-277.
- Schwartz, D., & Gorman, A. H. (2003). *Community Violence Exposure and Children's Academic Functioning.* *Journal of Educational Psychology*, 95, 163-73.
- Sprague, J. R. & Horner, R. H. (2006). Schoolwide Positive Behavior Supports. In S. R. Jimerson & M. J. Furlong (Eds.), *The Handbook of School Violence and School Safety: From Research to Practice*. Mahway, NJ: Lawrence Erlbaum Associates, Inc.
- Slee, P. T., & Rigby, K. (1993). The relationship of Eysenck's personality factors and self-esteem to bully/victim behavior in Australian school boys. *Personality and Individual Differences*, 14, 371-373.

- Smith, P. K., & Brain, P. (2000). Bullying in schools: Lessons from two decades of research. *Aggressive Behavior, 26*, 1-9.
- Smith, P. K., & Ananiadou, K. (2003). Interventions to reduce school bullying. *Canadian Journal of Psychiatry, 48*(9), 591-599.
- Smith, P. K., & Sharp, S. (Eds.) (1994). *School bullying: Insights and perspectives*. London: Routledge.
- Smokowski, P.R., & Kopasz, K. H. (2005). Bullying in school: An overview of types, effects, family characteristics, and intervention strategies. *Children and Schools, 27*, 101-110.
- Soutter, A., & McKenzie, A. (2000). The use and effects of anti-bullying and anti-harassment policies in Australian schools. *School Psychology International, 21*, 96-105.
- Sugai, G., Horner, R. H., Dunlap, G., Hieneman, M., Lewis, T. J., Nelson, C. M., Scott, T., Liaupsin, C., Sailor, W., Turnbull, A. P., Turnbull, H. R., Wickham, D., Wilcox, B. & Rief, M. (2000). Applying positive behavior support and functional behavioral assessment in schools. *Journal of Positive Behavior Interventions, 2*, 131–143.
- Swearer, [S. M., & Espelage, D. L. \(2004\). A Social-Ecological Framework of Bullying Among Youth. Bullying in American schools: A social-ecological perspective on prevention and intervention.](#)
- Todd, A. W., Lewis-Palmer, T., Horner, R. H., Sugai, G., Sampson, N. K., & Phillips, D. (2003). *The School-wide Evaluation Tool: SET implementation manual*. University of Oregon.
- U.S. Department of Health and Human Services. (2001). *Youth violence: A report of the surgeon general*. Rockville, MD: Author
- Walker, H. M., Horner, R. H., Sugai, G., Bullis, M., Sprague, J. R., Bricker, D., & Kaufman, M. (1996). Integrated approaches to preventing antisocial behavior patterns among school-age children and youth. *Journal of Emotional Behavior Disorders, 4*(4), 194-209.

